

ANDREW HUFFER - SNAPSHOT

You'll benefit from a practical approach that actively involves all people in planning and implementation to get effective outcomes. It's simple and will help you to make sound decisions and implement lasting solutions.

- 130+ Happy Clients
- 900+ Workshops delivered
- 18 Years in business

FACILITATION



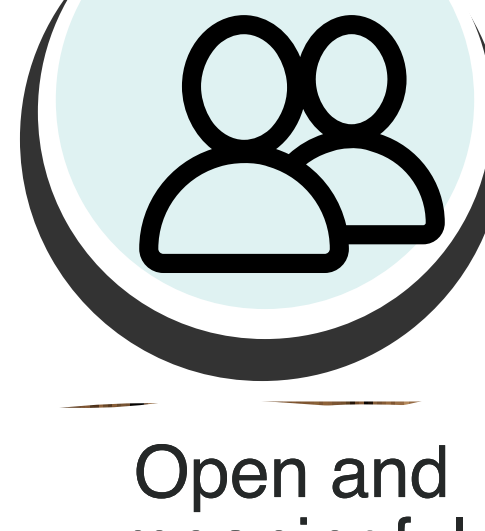
No-nonsense processes leading to decisions that stick

TEAMS



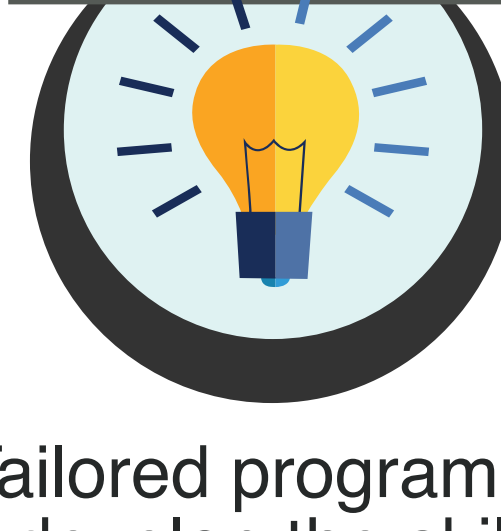
Build capacity and collaboration within your team

ENGAGEMENT



Open and meaningful stakeholder engagement

TRAINING



Tailored programs to develop the skills and confidence of your team members

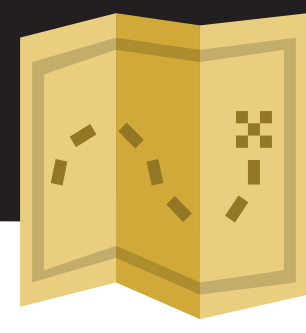
www.andrewhuffer.com.au

ph. 0429 470 285

RECENT WORK

- MAIN ROADS**: Integrated Management System Review
- RDA**: Strategic Planning with the Goldfields - Esperance RDA Board
- LOCAL GOVT**: Stakeholder engagement for waterways management plan
- AFAC**: Helping EM services professionals & researchers to get their message through

FACILITATION



You'd be surprised at how often a simple approach can deliver results. No hugs. No games. Instead you'll experience genuine listening between participants in an environment of being 'above the line' where each person takes responsibility for their behaviours and actions.

PORTFOLIO

PLANNING



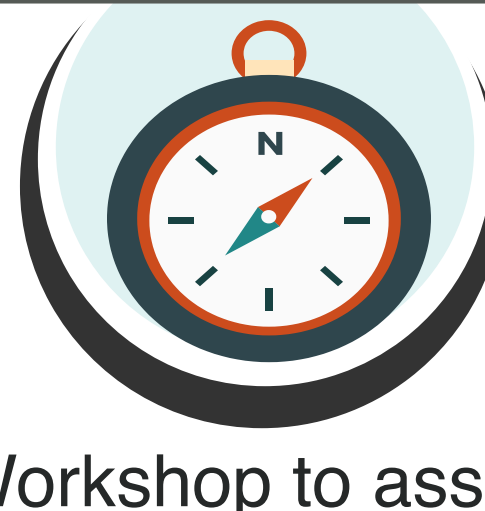
Industry workshop to identify research and development priorities for the WA wine industry

COLLABORATION



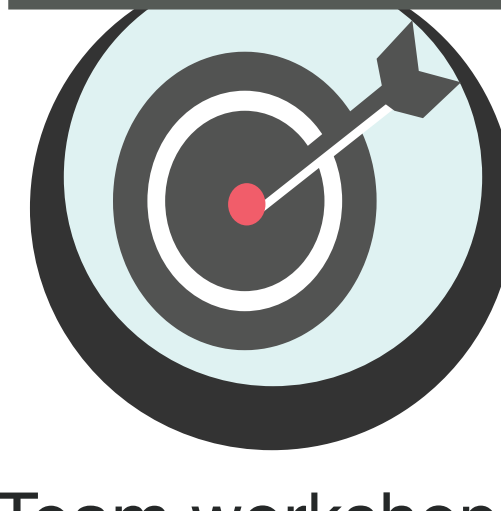
Sector-wide workshop to assist members of the expanded Financial Counselling Network to agree on how they'll work together

STRATEGY



Workshop to assist a Regional Development Board to position itself for the future

PRIORITIES



Team workshop to identify environmental objectives, targets and indicators aligned with program obligations

TEAMS



We have a strong focus on building the skills of your people using a combination of our hands-on, real-world experience backed by sound theory.

PORTFOLIO

AGRICULTURE



Coaching and planning work with the Sheep Industry Business Innovation Project Team

INFRASTRUCTURE



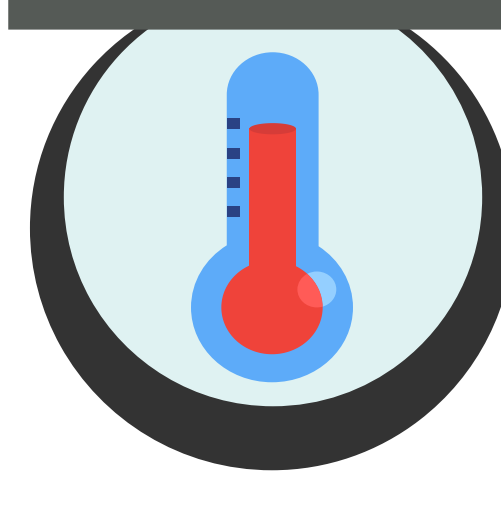
Coaching and review services for the project team responsible for training users of a new CRM system in Main Roads WA

LEADERSHIP



Workshop with the DPIRD Leadership Team to plan for changes associated with departmental amalgamation.

HEALTH



Workshop to identify options to improve delivery of the asset management system in a major public hospital

ENGAGEMENT



Well planned, open and transparent processes are paramount to achieving effective Stakeholder Engagement.

PORTFOLIO

REVIEW



Targeted engagement to review a major WA Beef industry program

INDUSTRY PLAN



Stakeholder engagement design and implementation for the preparation of the WA Timber Industry Development Plan

COMMUNITY PLANS



Community engagement to gain input into local government strategic plans

MANAGEMENT PLAN



Community forums to provide input into a waterways management plan

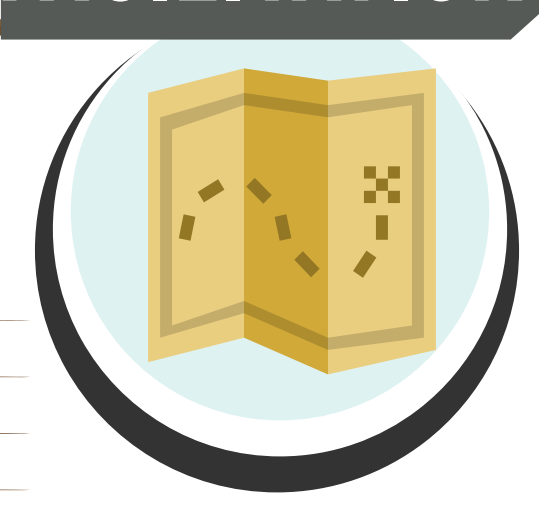
TRAINING



We'll work with you and your team members to ensure they have the right skills, along with the capacity and support to confidently apply them.

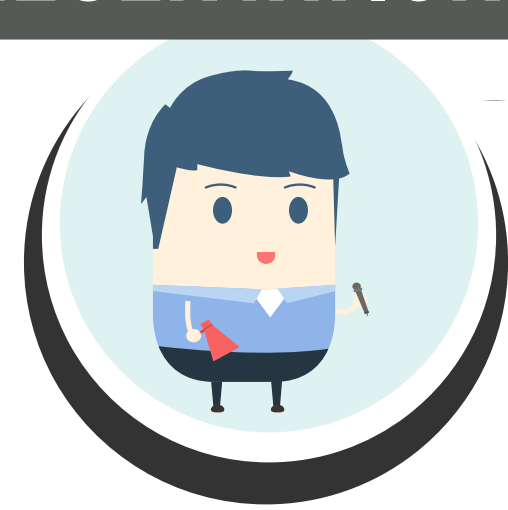
PROGRAMS

FACILITATION



The skills, tools and processes you need to help people to contribute their views, experience and expertise

PRESENTATIONS



How to best communicate your message to maximise its reach and impact

COMMUNICATION



Improve the internal and external client communication skills of your staff

EVENTS



A step-wise plan to fully engage all attendees at your next event

AFFILIATIONS



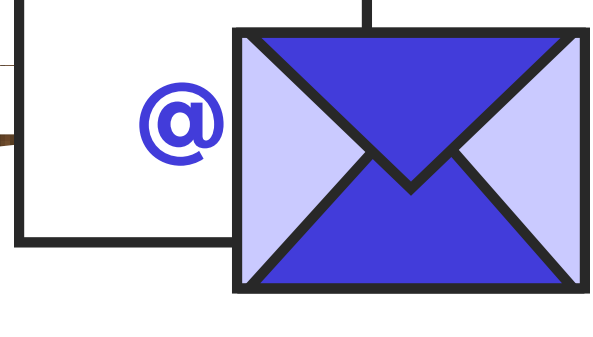
I continually strive to develop and share my knowledge, skills and networks so that you'll have direct access to cutting edge experience that you can apply directly to your own world...



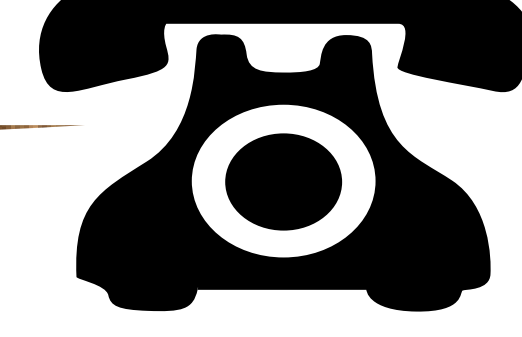
CONTACT

By now you can see that there are plenty of ways in which I can help you.

Contact me today (yes, *today!*) to schedule an initial 20 minute strategy session to make sure we're a good fit for each other and then (hopefully!) to map out our next moves...



andrew@andrewhuffer.com.au



0429 470 285